

About Us

Benzing Surveying, LLC is a small business that offers BIG solutions for your project. We push the limits beyond the latest in surveying technology to meet our clients' needs. Having the latest in technology and the technical ability to operate it is important, but even more important is having the professional judgement needed to observe the task at hand and provide the best solution. Delivering Professional Surveying services on time and on budget is our mission. As professional surveyors, we are here to serve the public, let us know how we can help you with your surveying needs.



Our mission is "To provide quality, professional, surveying services in a timely manner."



Our Surveying Experts:

Ryland Benzing, PLS

Ryland is a Professional Licensed Land Surveyor in both Iowa and Wisconsin. He began surveying in 2003. Ryland has experience working on boundary, topographic, construction, and hydrographic surveying projects. Ryland holds a FAA Part 107 sUAS Pilot License which allows him to fly drones to collect aerial imagery and survey data commercially.

Shannon Benzing, Administrative Professional

Shannon primarily helps with business management. Utilizing her Production Manager and Lean Principle experience, Shannon drives the team to provide deliverables in the most efficient way. She instills the goal of delivering a quality, on-time service.

Luke Benjegerdes, Survey Technician

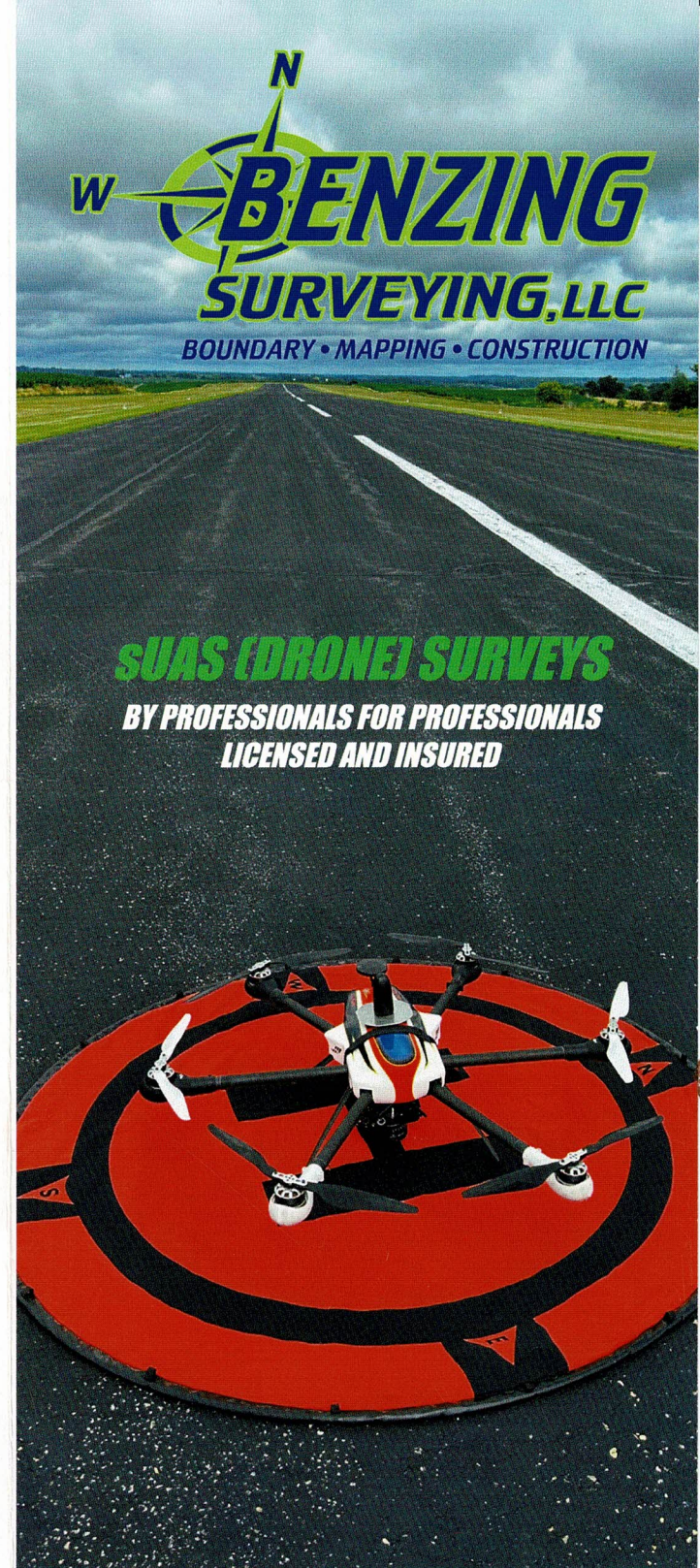
Luke has been surveying since 2015 and has experience working on boundary, topographic, construction, photogrammetric, and hydrographic surveying projects. He also holds a FAA Part 107 sUAS Pilot License.

Part Time & Contract Employees

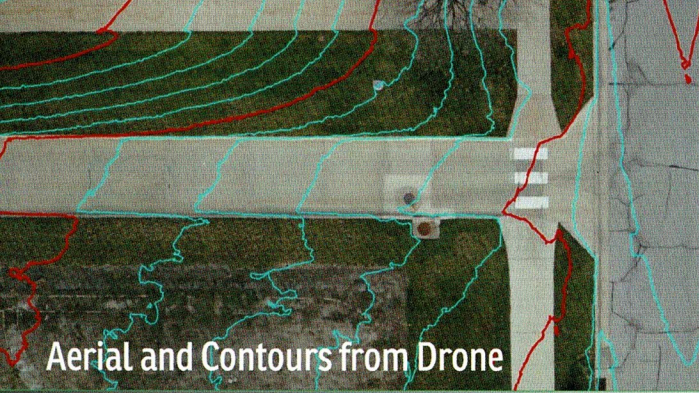
Benzing Surveying brings on the additional help when needed to deliver the quality you expect, on-time.

BENZING SURVEYING, LLC

808 5th Avenue SW
Waukon, IA 52172
www.benzingsurveying.com



SUAS (DRONE) SURVEYS
BY PROFESSIONALS FOR PROFESSIONALS
LICENSED AND INSURED



Aerial and Contours from Drone

Services

- Boundary Surveys (Iowa & Wisconsin)
- ALTA/NSPS Land Title Surveys
- PLSS Corner Perpetuation Surveys
- Easements, Vacations, and Dedications
- Subdivisions
- Topographic Surveys for Engineering Designs
- Construction Staking & Layout
- As-built Surveys
- FEMA Flood Elevation Certifications
- Hydrographic Surveys
- **sUAS (Drone) PhoDAR, Photography, and Videography**



Drone over Landfill Site



Point Cloud from Drone

sUAS (Drone) Surveys

What We Do:

We offer small Unmanned Aerial Systems (sUAS), aka Drone Surveying services.

The services we provide are:

- Data formatted to be usable in Design Software
- Topo Surveys allowing Volume and Quantity Calcs
- 1cm Resolution Orthographic Aerials
- Geo-referenced Orthographic Aerials
- Video for Tower, Bridge, and Site Inspections

Where We Do it:

Our sUAS (Drone) is ideal for use in:

- Road Corridors
- Landfills and Quarries
- Creek/River Banks
- Areas where it may be dangerous to send a person
- ALTA Surveys
- Tower, Bridge, and Construction Sites

How We Do it:

Utilizing a Whirrx Drone System with a high-resolution camera and high-accuracy GNSS payload. We provide proven vertical accuracies of 1 - 1.5 cm (0.03' - 0.05') on hard surfaces. Data is reviewed by Professional Land Surveyors and Certified Photogrammetrists to ensure accuracies.

When/why to utilize a sUAS (Drone)?

We have the knowledge and experience to determine when sUAS should be used for your project.

- In locations requiring safer data acquisition methods than traditional survey methods
- Quick turnaround times
- Typically sites larger than 5 acres
- To quickly capture a "snapshot" of the site saving topographic data for later analysis
- To maximize accuracies



Point Cloud Cross Section from Drone

BENZING SURVEYING, LLC

808 5th Avenue SW
Waukon, IA 52172

(563) 568-2136

www.benzingsurveying.com